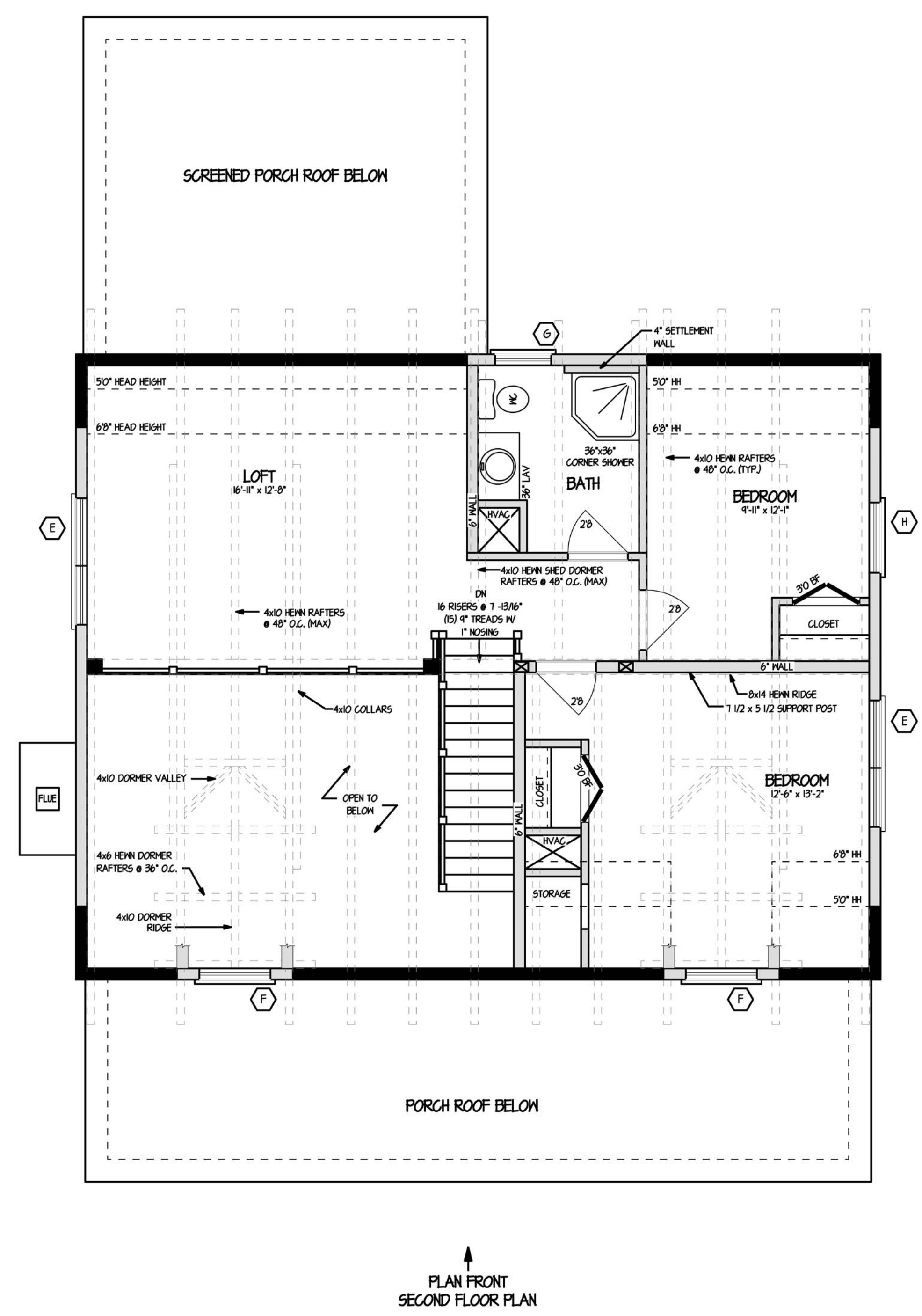


PLAN FRONT
FIRST FLOOR PLAN



PLAN FRONT
SECOND FLOOR PLAN

NOTE: CUSTOMER AND HEARTHSTONE REPRESENTATIVE MUST CONFIRM ALL INFORMATION PROVIDED ON THIS SCHEDULE BY INSTALLING EACH LINE ITEM. PLEASE PROVIDE ANY ADDITIONAL INFORMATION, IF NECESSARY. ALL INFORMATION ON THIS SCHEDULE MUST BE APPROVED BY CUSTOMER PRIOR TO CONFIRMATION.

WINDOW SCHEDULE							
	QTY	MODEL(KOLBE & KOLBE)	ROUGH OPENING	EXT. JAMBS	GRILLE	SPECIAL NOTES	INITIAL
A	2	HERITAGE HDK282B-2	5'-1 1/2" x 5'-5"	5 9/16"	10" SIMULITE		
B	1	HERITAGE HDK1616	1'-10" x 3'-5"	5 9/16"	10" SIMULITE		
C	2	HERITAGE HDK282B	2'-10" x 5'-5"	5 9/16"	10" SIMULITE		
D	3	HERITAGE HDK2816	2'-10" x 3'-5"	5 9/16"	10" SIMULITE		
E	2	HERITAGE HDK282B-2	5'-1 1/2" x 5'-5"	6 9/16"	10" SIMULITE		
F	2	HERITAGE HDK2822	2'-10" x 4'-5"	6 9/16"	10" SIMULITE		
G	1	HERITAGE HDK2416	2'-6" x 3'-5"	6 9/16"	10" SIMULITE		
H	1	HERITAGE HDK282B	2'-10" x 5'-5"	6 9/16"	10" SIMULITE		
J	1	HERITAGE HDK282B-3	8'-5" x 5'-5"	5 9/16"	10" SIMULITE		

DOOR SCHEDULE							
	QTY	MODEL	ROUGH OPENING	EXT. JAMBS	GRILLE	SPECIAL NOTES	INITIAL
2	1	WOOD 3066	3'-2 1/2" x 7'-0"	5 9/16"	N/A	BY OWNER, "VERIFY ROUGH OPENING"	
3	1	WOOD 3066 DITCH (OUTSWING) HL	3'-2 1/2" x 6'-11 1/4"	5 9/16"	N/A	BY OWNER, "VERIFY ROUGH OPENING"	

SPECIAL NOTE: 3-1/2" WIDE SIDE TRIM AND 5-1/2" WIDE TOP TRIM IS REQUIRED TO ACCOMMODATE LOG ROUGH OPENINGS.

NOTE: DOOR/WINDOW OPENINGS IN LOG MALL SHALL BE CUT IN ACCORDANCE W/ROUGH OPENINGS SHOWN ON MALL PRODUCTION PLANS, AND NOT THOSE STATED ON THIS SCHEDULE.

- NOTES:**
- WINDOWS INDICATED ON THIS PLAN ARE KOLBE & KOLBE HERITAGE SERIES.
 - DOORS INDICATED ON THIS PLAN ARE PROVIDED BY OWNER.
 - SPEC SHEETS/ROUGH OPENINGS MUST BE SUPPLIED TO HEARTHSTONE, INC. IMMEDIATELY, IF STANDARD SPEC KOLBE & KOLBE WINDOWS AND DOORS ARE BEING SUBSTITUTED. ALSO VERIFY LOCATIONS WITH DIMENSIONS.
 - SOME AREAS OF FIRST FLOOR CEILING WILL REQUIRE FURRING TO CONCEAL SECOND FLOOR PLUMBING.
 - STAIR MATERIAL TO BE INSTALLED AND CUT TO CORRECT SIZE BY OTHERS.
 - IT IS NECESSARY THAT ALL HEARTHSTONE HOMES HAVE A HVAC SYSTEM THAT WILL PROVIDE PROPER VENTILATION FOR THE HOME. IT SHALL BE THE RESPONSIBILITY OF THE OWNER/CONTRACTOR AND HVAC CONTRACTOR TO SUPPLY AN ADEQUATE HVAC SYSTEM THAT WILL PROVIDE PROPER VENTILATION & INDOOR HUMIDITY FOR THE HOME.

DESIGN LOADS:

FLOOR: 40# LIVE LOAD, 10# DEAD LOAD
 ROOF: 30# LIVE LOAD, 10# DEAD LOAD

○ - INDICATES SUPPORT POST w/POST JACK BY HEARTHSTONE, INC.
 ■ - INDICATES POST BY HEARTHSTONE, INC.
 - - - INDICATES HEIN LOG MALL BY HEARTHSTONE, INC.
 - - - INDICATES CONVENTIONALLY BUILT 2x STUD WALLS BY OTHERS (EXCEPT FOR SHED DORMER)

THE DESIGN REPRESENTED ON THIS PLAN IS INTENDED TO BE USED EXCLUSIVELY IN CONJUNCTION WITH THE CONSTRUCTION OF A STRUCTURE MANUFACTURED BY HEARTHSTONE, INC. AND, UNDER COPYRIGHT LAW, MAY NOT BE USED FOR ANY OTHER PURPOSE.

© 2003 HEARTHSTONE, INC.
 ALL RIGHTS RESERVED RESPECTING DESIGN AND SELECT SHOWN ON THIS PLAN
 TIMBERWRIGHT & TIMBER TRACE™ ARE REGISTERED TRADEMARKS

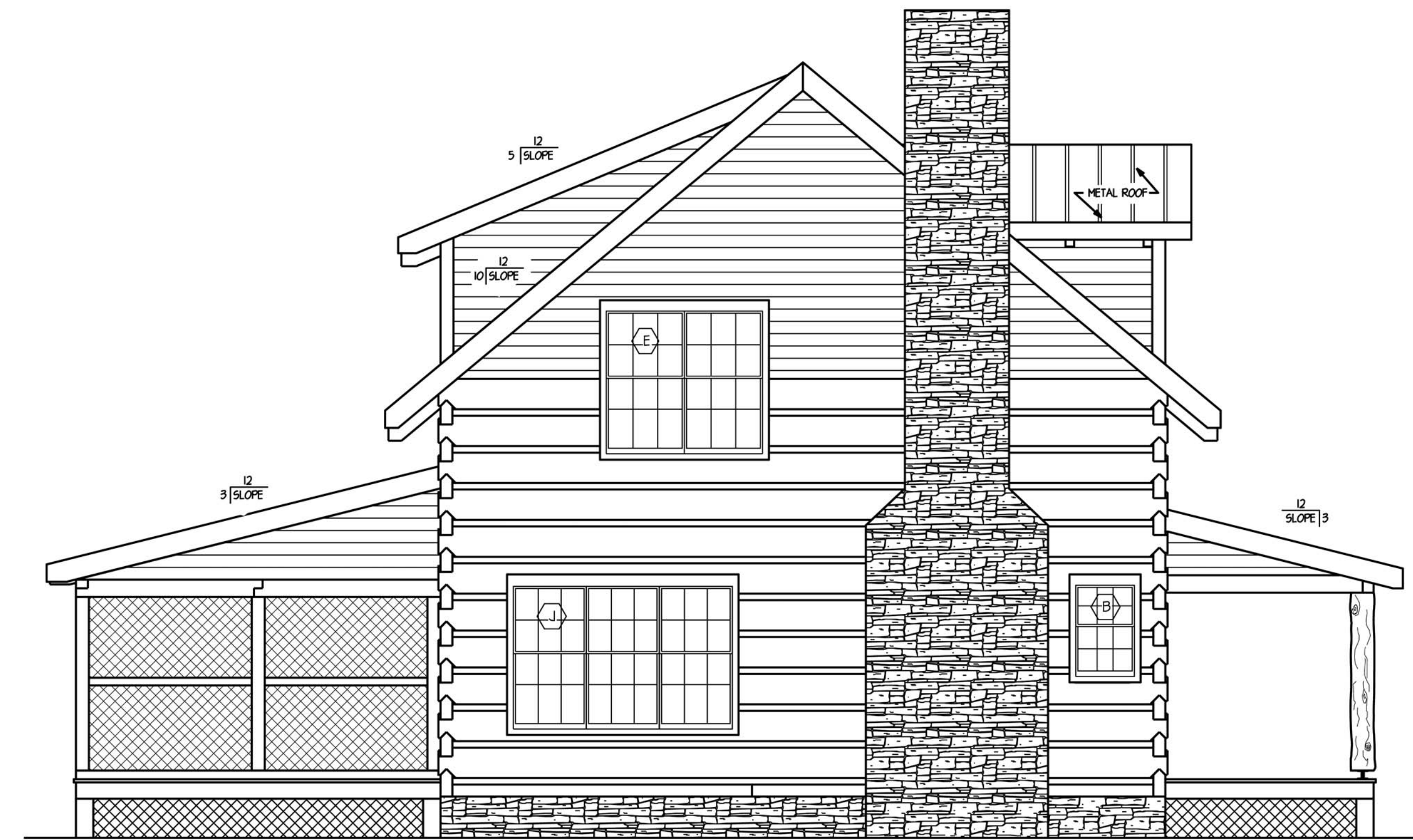
HEARTHSTONE, INC.
 1630 EAST HIGHWAY 25/70
 DANDRIDGE, TENNESSEE 37125
 800-247-4442

ANDERSON CREEK
 CUSTOMER: CUSTOMER
 MODEL: CUSTOM TIMBERWRIGHT LOG HOME
 SQUARE FOOTAGE: 1650
 TITLE: FIRST & SECOND FLOOR PLANS

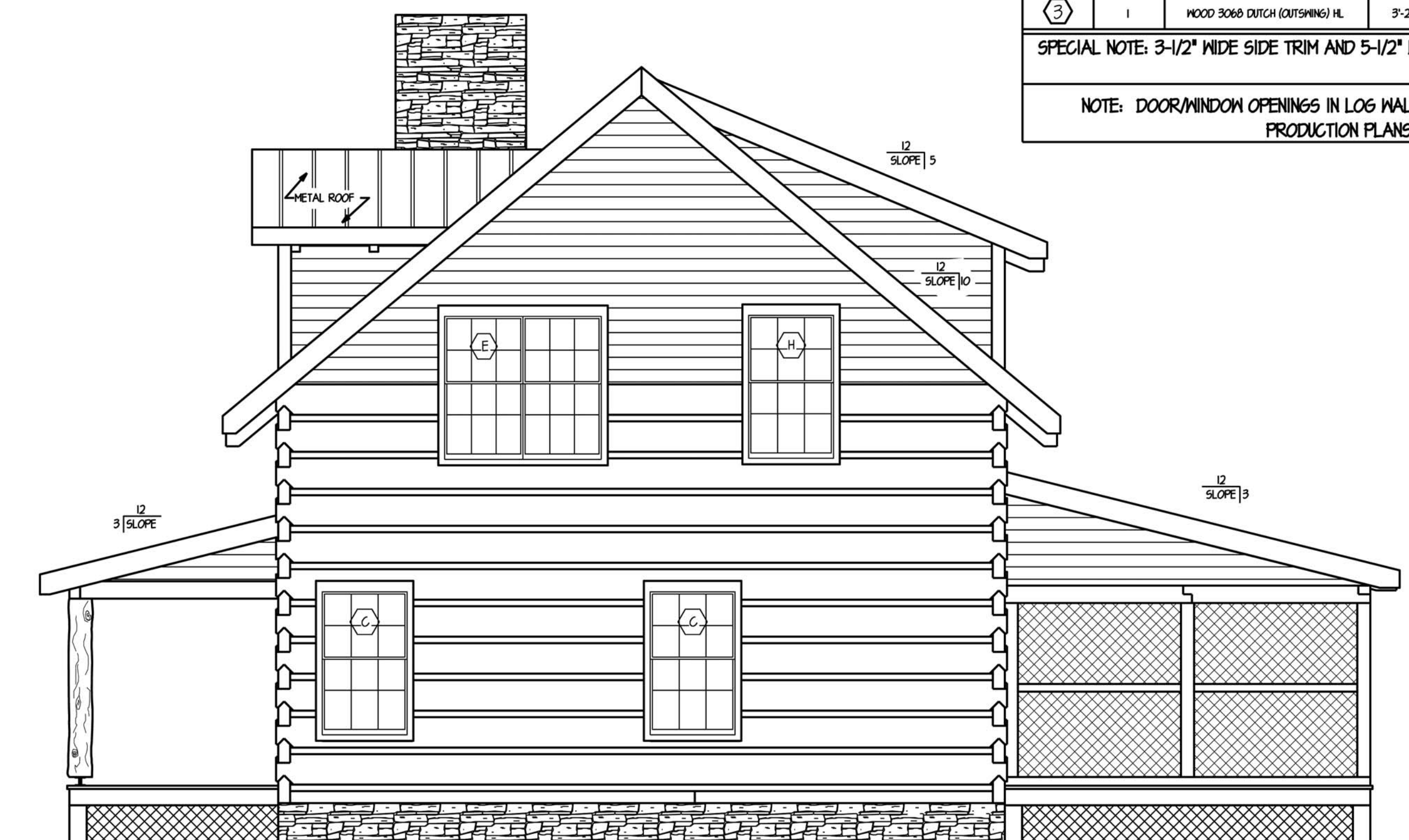
LAST DATE PLOTTED:	02-20-08
REVISION TYPE:	REV. BY: DATE:
REVISED FINALS	RADS, INC 4-30-04
REVISED WINDOWS	RADS, INC 5-04
SCALE:	1/4" = 1'-0"
DATE:	5-18-04
DRAWN BY:	RBA
CUSTOMER NAME:	GALTON
SALES ORDER NO.:	11250
JOB ORDER NO.:	9474
HEARTHSTONE REP.:	RICKETSON
SHEET NO.:	2



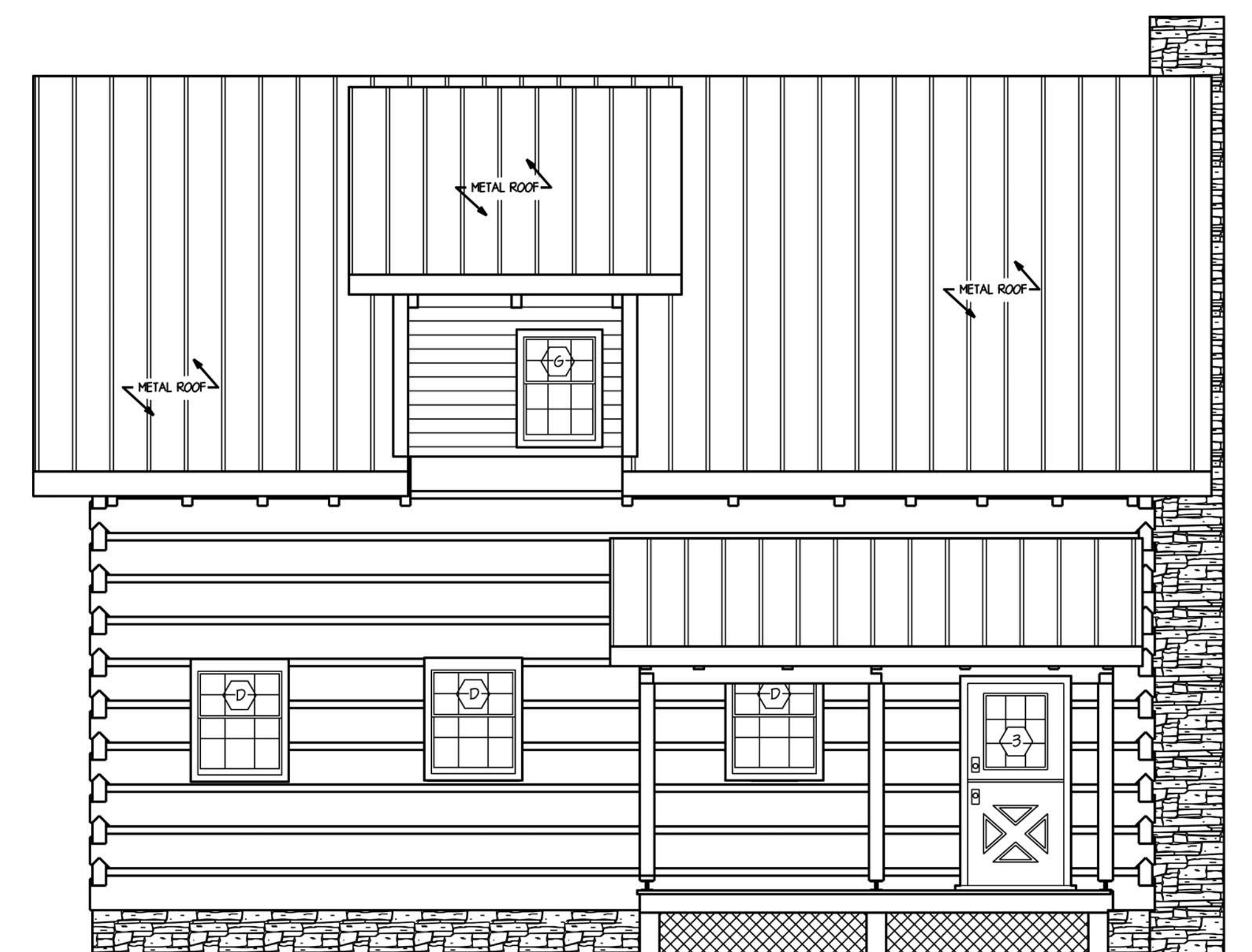
PLAN FRONT ELEVATION



PLAN LEFT ELEVATION



PLAN RIGHT ELEVATION



PLAN REAR ELEVATION

NOTE: CUSTOMER AND HEARTHSTONE REPRESENTATIVE MUST CONFIRM ALL INFORMATION PROVIDED ON THIS SCHEDULE BY INSTALLING EACH LINE ITEM. PLEASE PROVIDE ANY ADDITIONAL INFORMATION, IF NECESSARY. ALL INFORMATION ON THIS SCHEDULE MUST BE APPROVED BY CUSTOMER PRIOR TO CONFIRMATION.

WINDOW SCHEDULE							
	QTY	MODEL (KOLBE & KOLBE)	ROUGH OPENING	EXT. JAMBS	GRILLE	SPECIAL NOTES	INITIAL
(A)	2	HERITAGE HND2828-2	5'-1 1/2" x 5'-5"	5 9/16"	7/8" SIMULITE		
(B)	1	HERITAGE HND416	1'-10" x 3'-5"	5 9/16"	7/8" SIMULITE		
(C)	2	HERITAGE HND2828	2'-10" x 5'-5"	5 9/16"	7/8" SIMULITE		
(D)	3	HERITAGE HND2816	2'-10" x 3'-5"	5 9/16"	7/8" SIMULITE		
(E)	2	HERITAGE HND2828-2	5'-1 1/2" x 5'-5"	6 9/16"	7/8" SIMULITE		
(F)	2	HERITAGE HND2822	2'-10" x 4'-5"	6 9/16"	7/8" SIMULITE		
(G)	1	HERITAGE HND216	2'-4" x 3'-5"	6 9/16"	7/8" SIMULITE		
(H)	1	HERITAGE HND2828	2'-10" x 5'-5"	6 9/16"	7/8" SIMULITE		
(J)	1	HERITAGE HND2828-3	8'-5" x 5'-5"	5 9/16"	7/8" SIMULITE		

DOOR SCHEDULE							
	QTY	MODEL (KOLBE & KOLBE)	ROUGH OPENING	EXT. JAMBS	GRILLE	SPECIAL NOTES	INITIAL
(2)	1	WOOD 3068	3'-2 1/2" x 7'-0"	5 9/16"	N/A	BY OWNER, VERIFY ROUGH OPENING*	
(3)	1	WOOD 3068 DUTCH (OUTSPRING) HL	3'-2 1/2" x 6'-11 1/4"	5 9/16"	N/A	BY OWNER, VERIFY ROUGH OPENING*	

SPECIAL NOTE: 3-1/2" WIDE SIDE TRIM AND 5-1/2" WIDE TOP TRIM IS REQUIRED TO ACCOMMODATE LOG ROUGH OPENINGS.

NOTE: DOOR/WINDOW OPENINGS IN LOG WALL SHALL BE CUT IN ACCORDANCE W/ROUGH OPENINGS SHOWN ON WALL PRODUCTION PLANS, AND NOT THOSE STATED ON THIS SCHEDULE.

THE DESIGN REPRESENTED ON THIS PLAN IS INTENDED TO BE USED EXCLUSIVELY IN CONJUNCTION WITH THE CONSTRUCTION OF A STRUCTURE MANUFACTURED BY HEARTHSTONE, INC. AND, UNDER COPYRIGHT LAW, MAY NOT BE USED FOR ANY OTHER PURPOSE.

© 2003 HEARTHSTONE, INC.
ALL RIGHTS RESERVED RESPECTING DESIGN AND SELECT SHOWN ON THIS PLAN
TIMBERWRIGHT & ARE REGISTERED TRADEMARKS

HEARTHSTONE, INC.
1630 EAST HIGHWAY 25/70
DANDRIDGE, TENNESSEE 37125
800-247-4442

ANDERSON CREEK
CUSTOMER: CUSTOMER
MODEL: CUSTOM TIMBERWRIGHT LOG HOME
SQUARE FOOTAGE: 1650
FIRST & SECOND FLOOR PLANS

LAST DATE PLOTTED:	02-13-08
REVISION TYPE:	REV. BY: DATE:
REVISED FINALS	RADS, INC 11-30-04
WINDOW J	RADS, INC 10-27-04
REVISED WINDOWS	RBA 11-5-04
SCALE: 1/4" = 1'-0"	
DATE: 5-18-04	
DRAWN BY: RBA	
CUSTOMER NAME: GALTON	
SALES ORDER NO: 11250	
JOB ORDER NO: 9474	
HEARTHSTONE REP: RICKETSON	
SHEET NO: 4	